

CERTIFICATE OF LOCATION OF GOVERNMENT CORNER

NORTHEAST Corner of Section 22, Township 105 N., Range 42 W., 5 th P.M.

STATE OF MINNESOTA, County of MURRAY

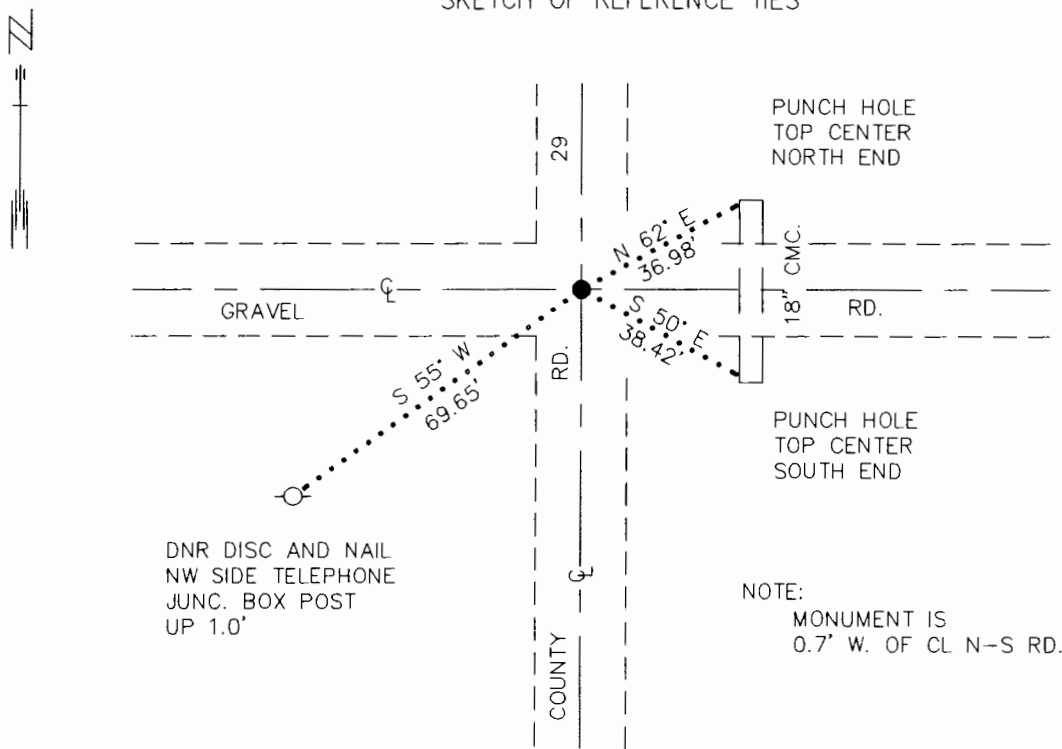
At the corner location shown on the sketch:

On 9/14/92 found a 1/2" IRON ROD, FLUSH
DATE

left monument as found, lowered monument, removed monument (explain)

On _____ Placed a _____
DATE

SKETCH OF REFERENCE TIES



1983 MURRAY COUNTY
COORDINATE SYSTEM
N = 115991.710
E = 474373.384

BEARINGS OBSERVED WITH COMPASS

Statement of evidence relative to this corner location is on back of page. 10/7/92
WMA01187.00.00.01

I hereby certify that this document and the data contained herein was prepared by me or under my direct supervision.

Lowell R. Pomeroy 10-26-92
SIGNATURE DATE

Registration No. 17005

- Land Surveyor, Professional Engineer
- County Surveyor, County Engineer

OFFICE OF THE COUNTY RECORDER

County of MURRAY

I hereby certify that this document was filed in the Co. recorders office at _____ .M. on the _____ day of OCT 27 1992 A.D., 19

County Recorder *James V. Johnson*
By _____, Deputy
DOCUMENT NO. _____

Northeast Corner Section 22, Township 105 North, Range 42 West

The DNR Bureau of Engineering contacted the following offices for information on this corner:

MN Secretary of State
Murray County Recorder and Highway Engineer
Moseng Land Surveying at Marshall
Madsen Land Surveying at Fairmont

- 1861 The U.S. General Land Office notes, on file in the Secretary of State's Office, show the corner marked with a post, made mound with trench and pits as per instructions.
- 1901 Surveyor's Record Book A, on file in the County Recorder's Office, on page 131, contains a survey by J.W. Woolstencroft. Survey describes the corner as a stone in grade. Corner is shown to measure 2664 ft. from the north quarter corner Section 23.
This information is also on file in the County Highway Engineer's Office.
- 1931 Surveyor's Record Book A, on file in the County Recorder's Office, on page 372, contains a survey that states; "See sec 23". Corner is shown to measure 2642.5 ft. from the north quarter corner Section 22.
This information is also on file in the County Highway Engineer's Office.
- No Date Surveyor's Record Book A, on file in the County Recorder's Office, on page 372, contains a survey that describes the corner as a stone with three reference ties. Corner is shown 2629 ft. from the east quarter corner Section 23.
- 1936 Old record book, on file in the County Highway Engineer's Office, describes the corner as a stone with two reference ties.
- 1971 April, a large book of corner ties, on file in the County Highway Engineer's Office, describes the corner as a field stone 1.1 ft. below grade. Placed a 1/4"x 12" rebar over the stone and took three reference ties. This information also appears on the previously mentioned old record book.
- 1992 September 14, the DNR Bureau of Engineering conducted a search for this corner and found a 1/2" iron rod flush in the bituminous surface of County Road #29. Iron rod was found to measure:
2641.99 ft. from the north quarter corner Section 22
2629.27 ft. from the east quarter corner Section 22
2588.25 ft. from the east quarter corner Section 15

Analysis of the available information led the DNR Bureau of Engineering to conclude that the found iron rod marks the location of the corner.